

twentyfive7

GAMUDA KEMUNING



QUAYSIDE
SQUARE



2 & 3-Storey Individual Title Shops



Artist's Impression

THE FIRST PARISIAN-STYLED SHOPS

Experience the thrill of exponential growth with Quayside Square, the 2nd phase of Quay District. Dive into the allure of exclusive Parisian-themed shops, strategically positioned to captivate high-value clientele and surrounded by a flourishing locale.

50M
50m Next To Quayside Mall & Wellness Park

Up to 5%
Return On Investment (ROI)

600,000
Monthly Visitors To Quayside Mall

10,000
Work Population Nearby

35
Limited Units Available

Zero
Maintenance Fee

14,580
Residential Population Within twentyfive7

5*
Major Highways
*1 Upcoming Highway

Ready For A Diverse Tenant Mix

A MASTER PLAN ANCHORED BY AN ELITE COMMUNITY

Experience the epitome of luxury at twentyfive7. This pedestrian-first township has various paths connecting residential enclaves - all converging at Quay District.

Not only is this the community's vibrant heart, but it is surrounded by Quayside Mall, bustling retail, commercial spaces, lakeside activities - making this place greatly appealing for visitors from near and far - with proven foot traffic and constant growing popularity.

Launched Phases

- 1 Lucent Residence
- 2 Quayside Tower
- 3 Quayside Mall
- 4 The Amber Residences
- 5 Quayside Shoppes
- 6 Luxura Designer Link Villas
- 7 Luxura Designer Courtyard & Link Villas
- 8 Levane Residences
- 9 Quayside Plazas

New Launch

12 **QUAYSIDE SQUARE**

Upcoming Development

- 10 - 11 Upcoming Commercial Development
- 13 Upcoming Residential Development



Next to Quayside Mall
Artist's Impression

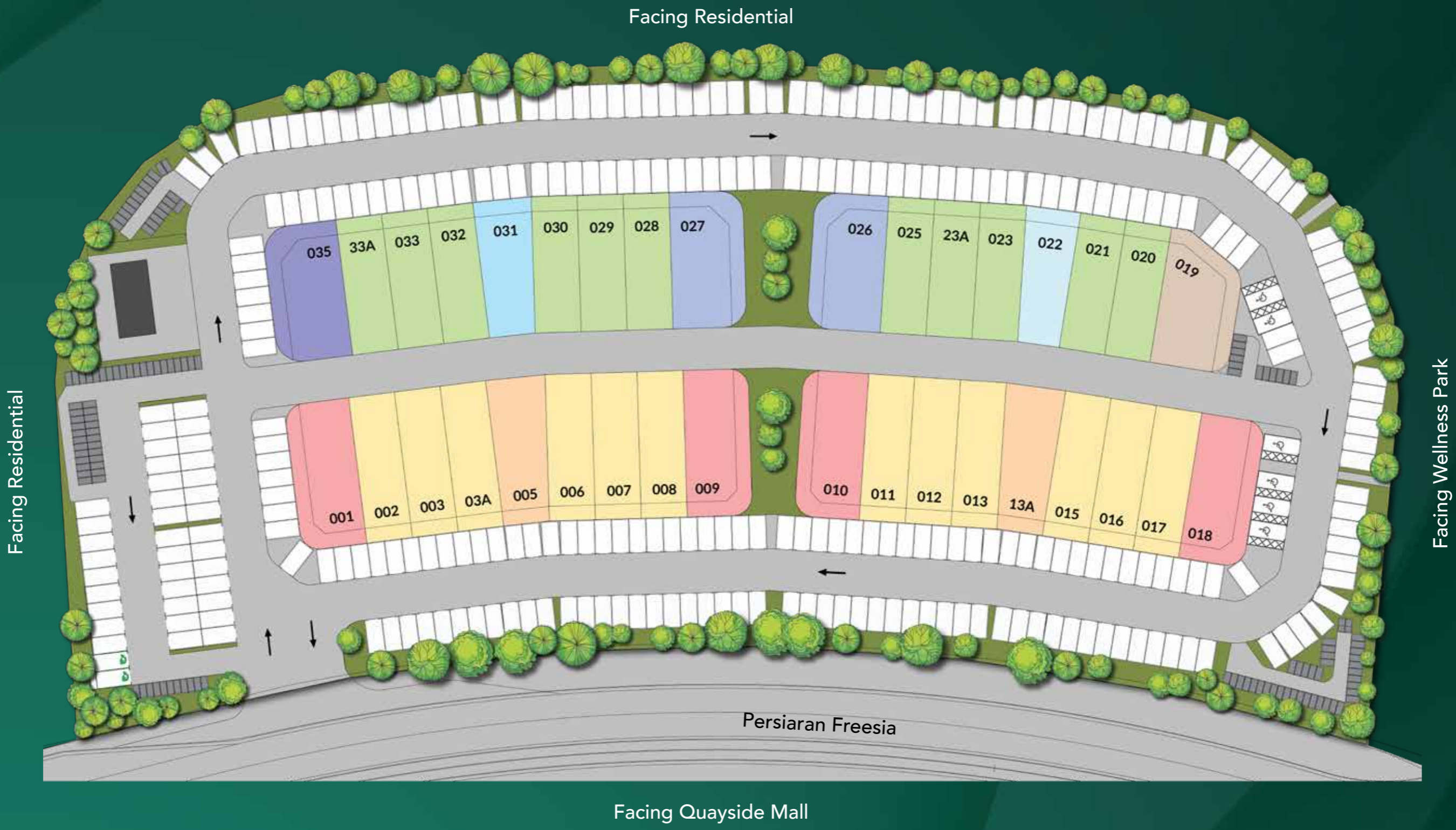


Next to Wellness Park
Artist's Impression

SITE PLAN

QUAYSIDE SQUARE

- Type A1**
22' x 70'
- Type B1**
31' x 70'
- Type B3**
35' x 65'
- Type C1**
22'/28' x 70'
- Type C3**
26'/20' x 65'
- Type A2**
22' x 65'
- Type B2**
35' x 65'
- Type B4**
37' x 65'
- Type C2**
28'/22' x 65'



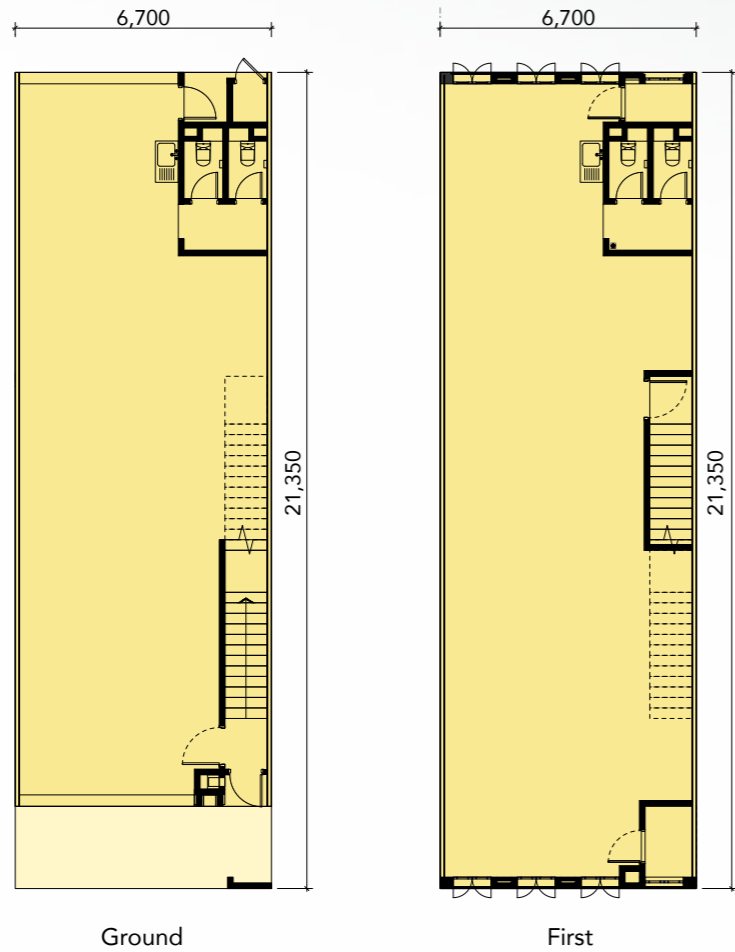
FLOOR PLAN

TYPE **A1**
Intermediate

2 Storeys

Land Size
22' x 70'

Built-up
3,080 sq. ft.



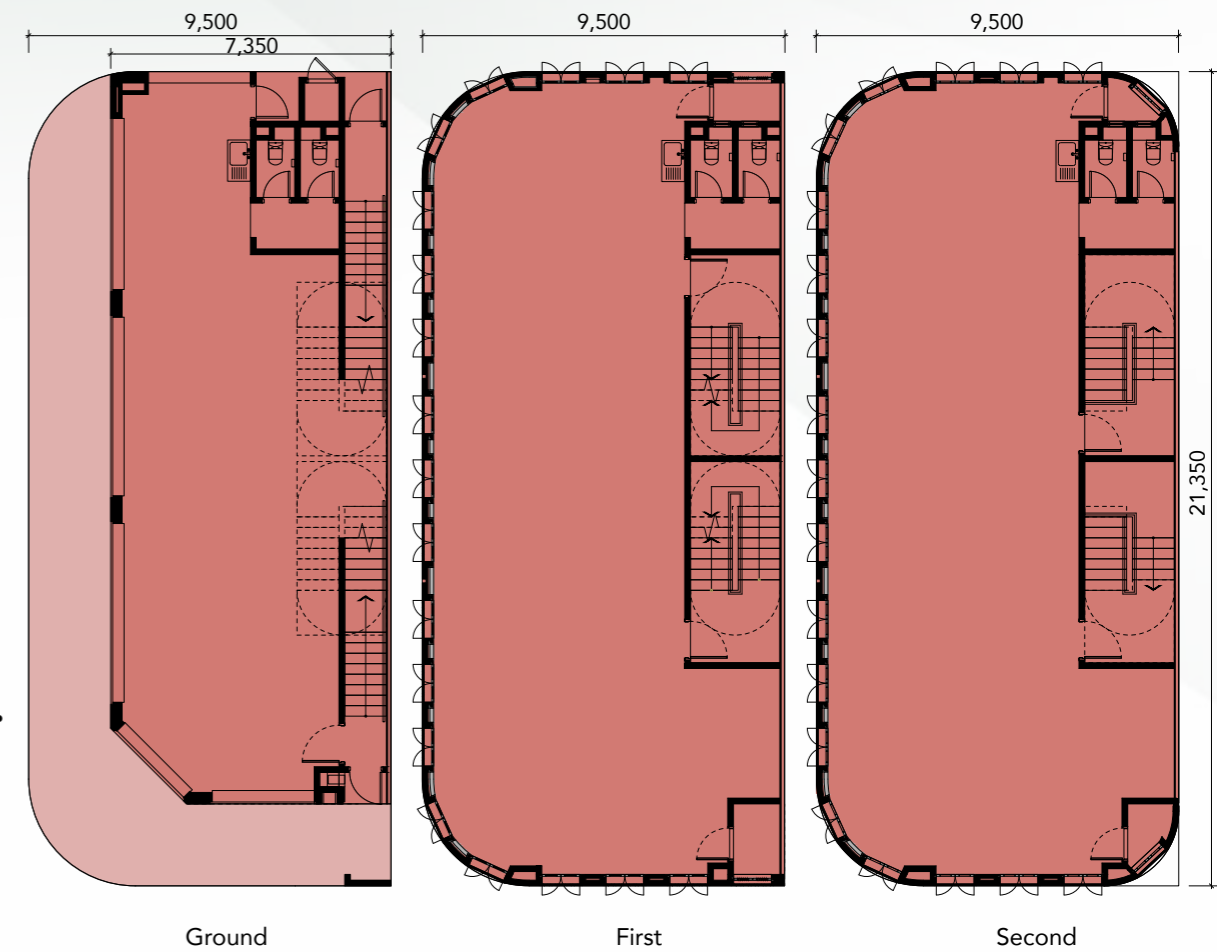
FLOOR PLAN

TYPE **B1**
Corner

3 Storeys

Land Size
31' x 70'

Built-up
6,423 sq. ft.

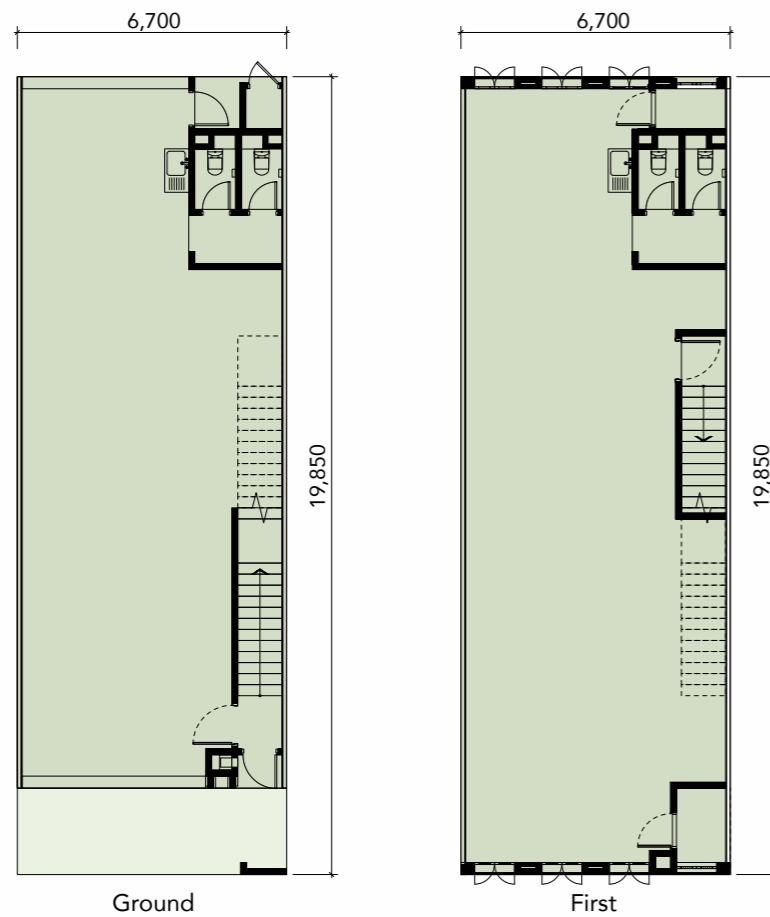


TYPE **A2**
Intermediate

2 Storeys

Land Size
22' x 65'

Built-up
2,860 sq. ft.

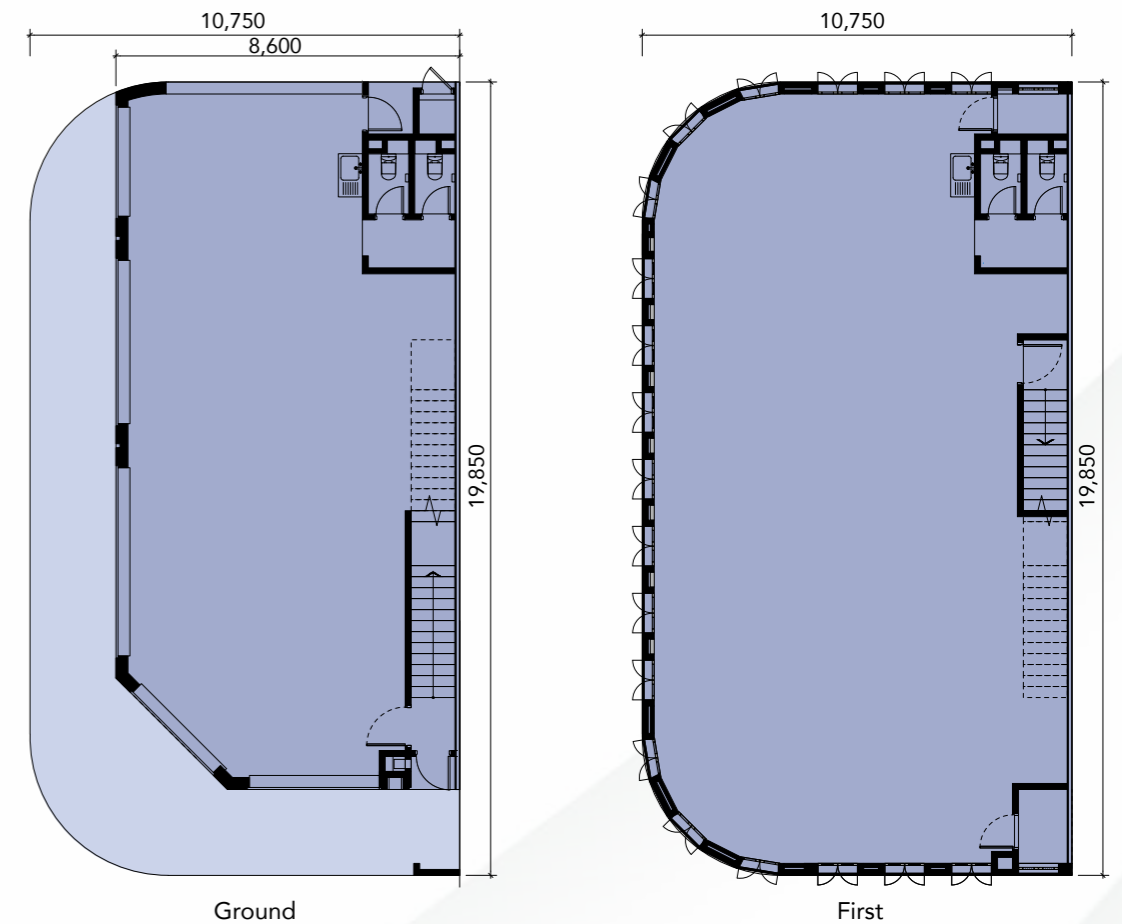


TYPE **B2**
Corner

2 Storeys

Land Size
35' x 65'

Built-up
4,484 sq. ft.



FLOOR PLAN

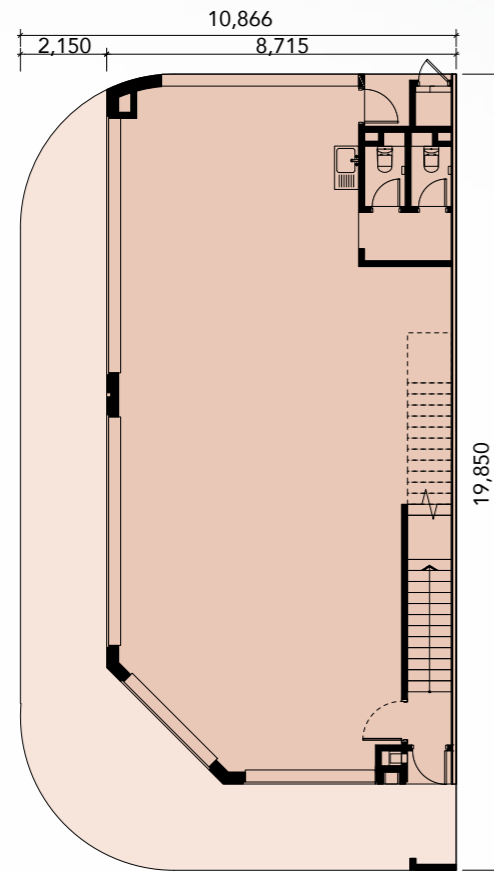
TYPE **B3**

Corner

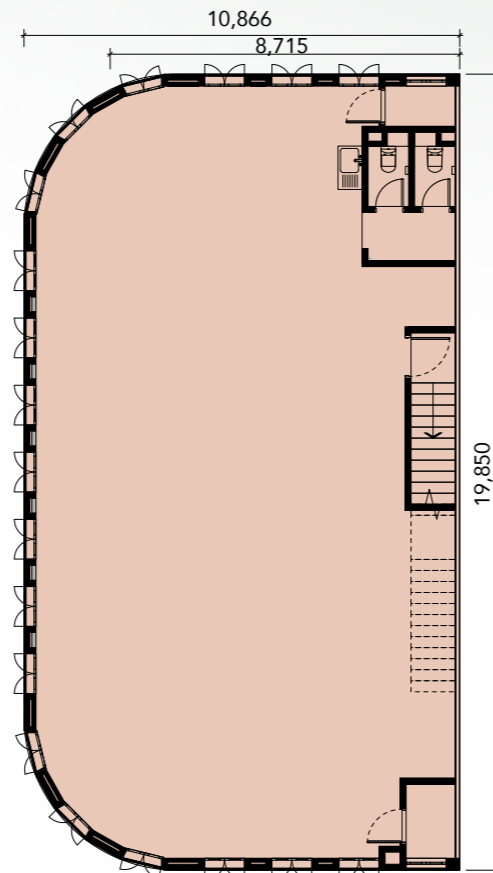
2 Storeys

Land Size **35' x 65'**

Built-up **4,508 sq. ft.**



Ground



First

FLOOR PLAN

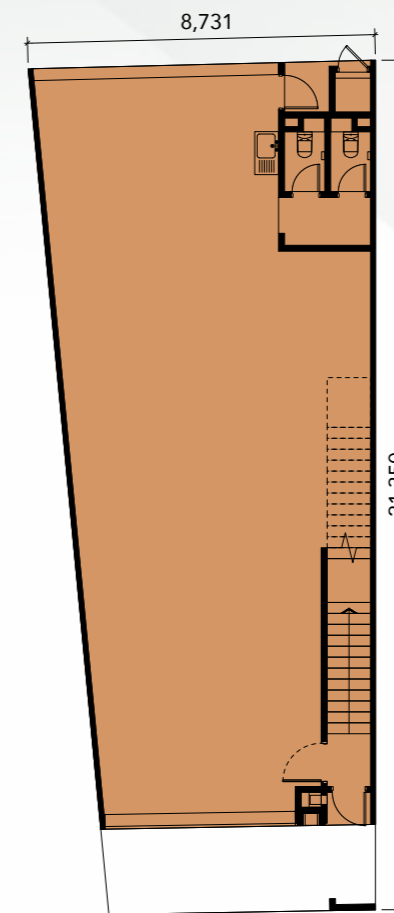
TYPE **C1**

Intermediate

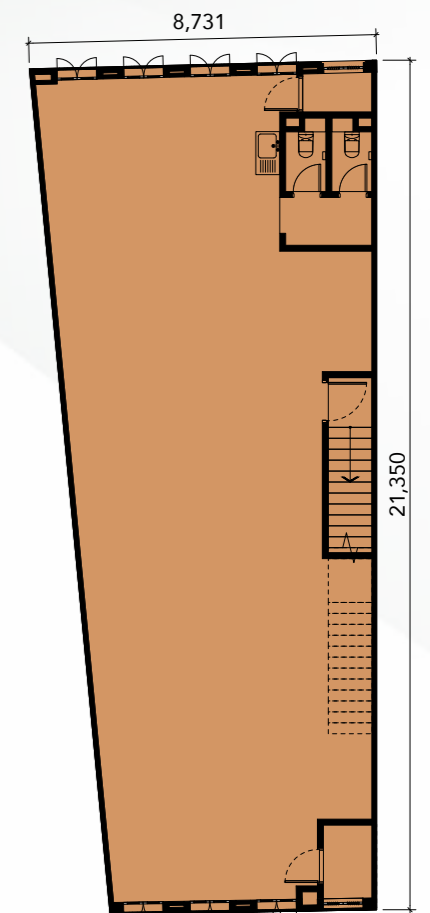
2 Storeys

Land Size **22'/28' x 70'**

Built-up **3,540 sq. ft.**



Ground



First

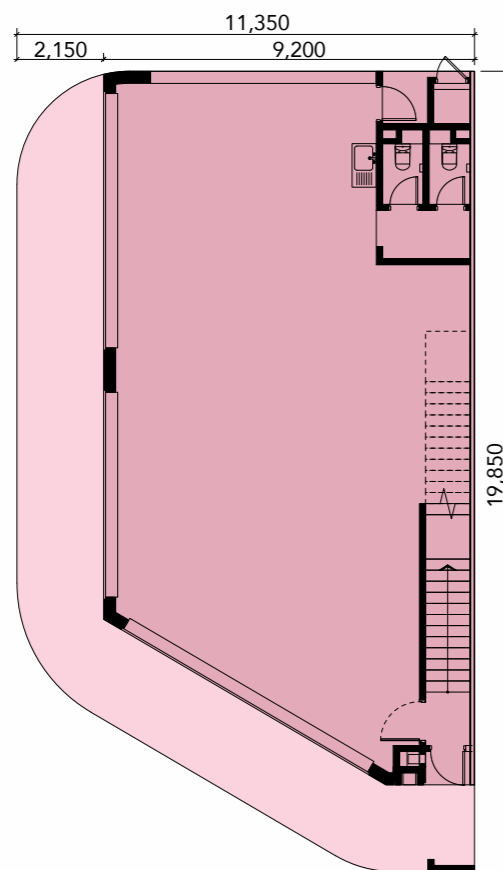
TYPE **B4**

Corner

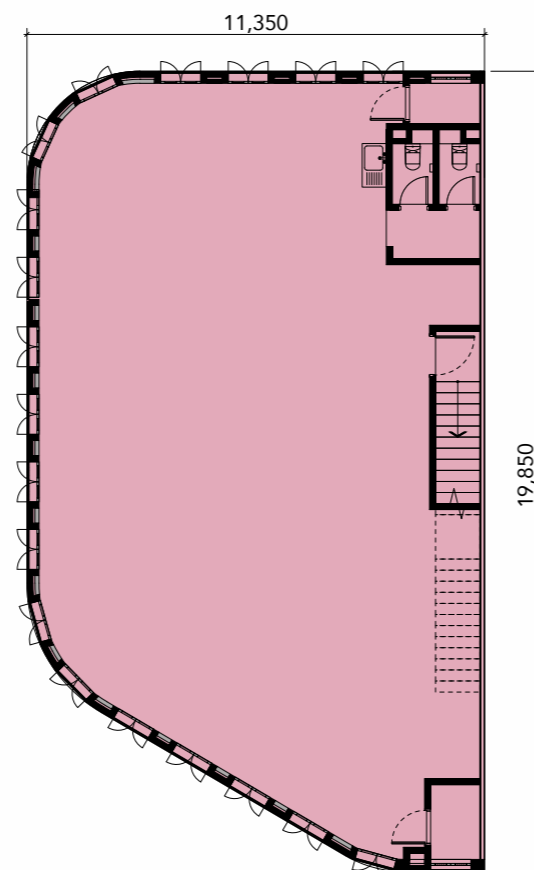
2 Storeys

Land Size **37' x 65'**

Built-up **4,334 sq. ft.**



Ground



First

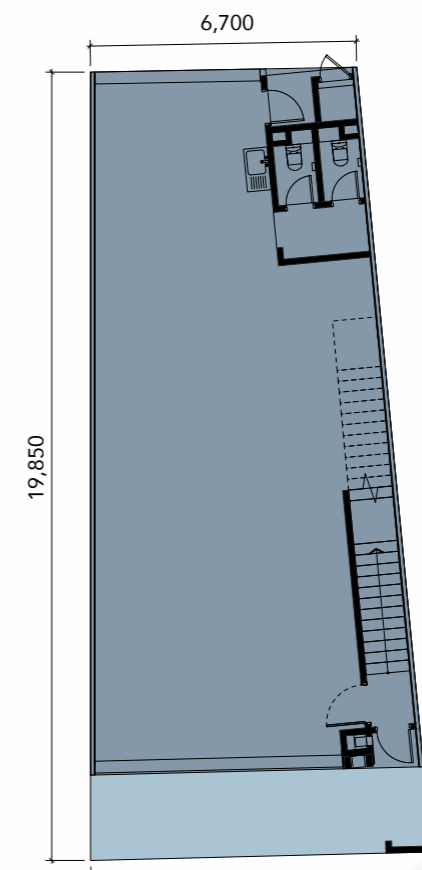
TYPE **C2**

Intermediate

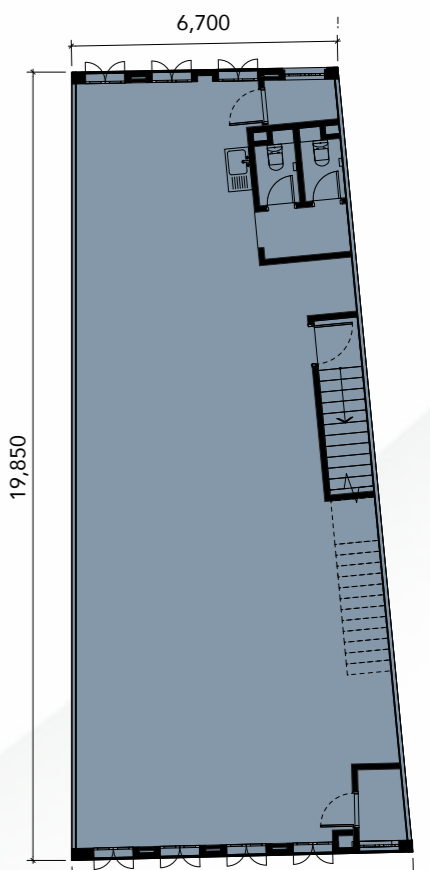
2 Storeys

Land Size **28'/22' x 65'**

Built-up **3,262 sq. ft.**



Ground



First

FLOOR PLAN

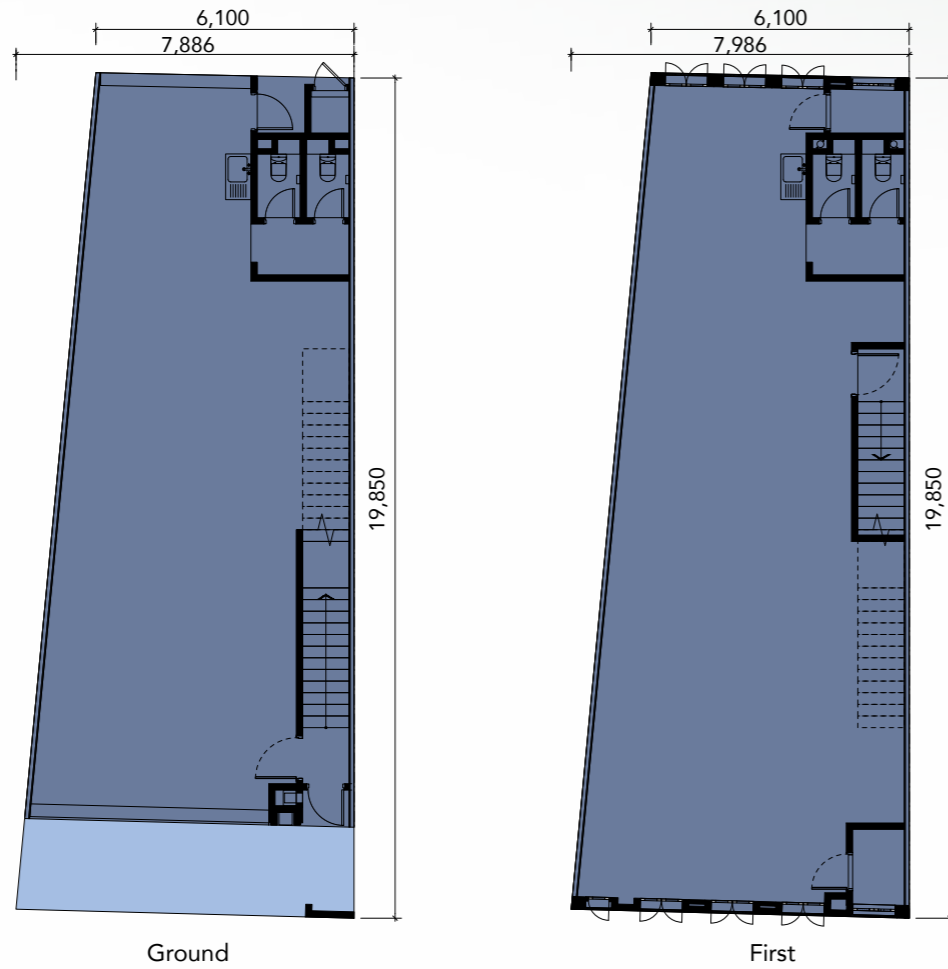
TYPE
C3

Intermediate

2
Storeys

Land Size
26'/20' x 65'

Built-up
3,006 sq. ft.



Ground

First

CONNECTED CONVENIENCE

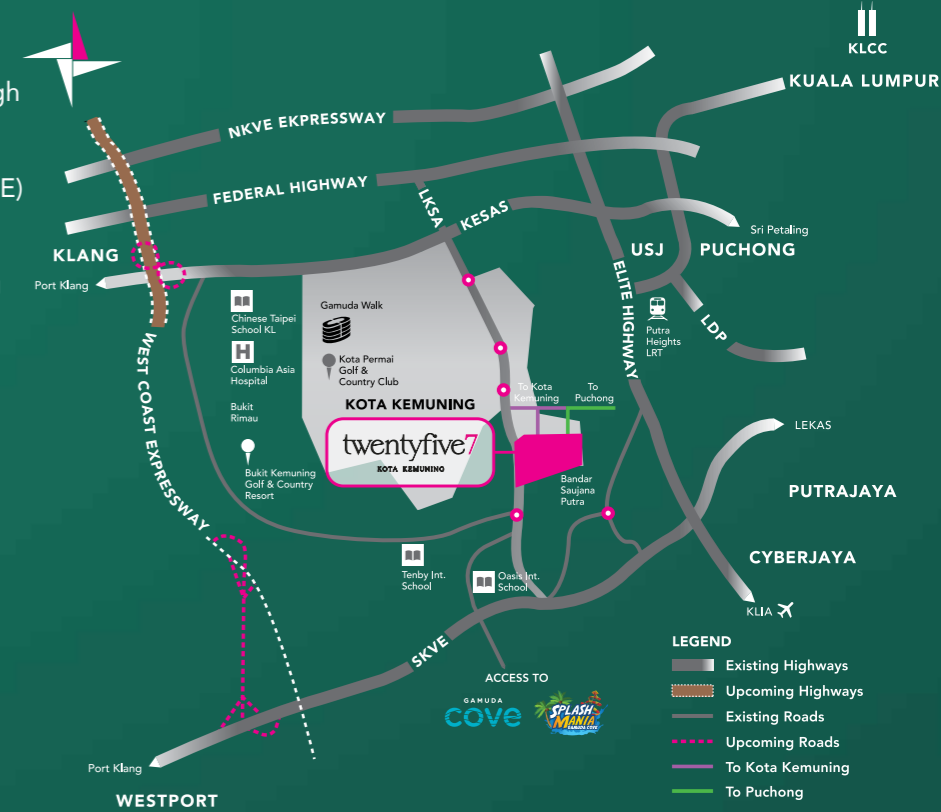
ACCESSIBILITY

twentyfive7 is conveniently accessible through five major highways:

- Shah Alam Expressway (KESAS)
- North-South Expressway Central Link (ELITE)
- South Klang Valley Expressway (SKVE)
- Kemuning-Shah Alam Highway (LKSA)
- West Coast Expressway (WCE) - Upcoming Highway



Shuttle van service for twentyfive7 residents to and from Putra Heights LRT station



RADIUS	AMENITIES	RECREATION	EDUCATION
Within 3KM	<ul style="list-style-type: none"> • Quayside Mall at twentyfive7 • Jaya Grocer at twentyfive7 • 99 Speedmart at twentyfive7 • TMG Mart at twentyfive7 	<ul style="list-style-type: none"> • MBO Cinemas at twentyfive7 • Canal Park, Central Park, Community Park & Wellness Park at twentyfive7 	<ul style="list-style-type: none"> • Melody Kindyland at twentyfive7 • Tenby International School • Oasis International School
5KM	<ul style="list-style-type: none"> • Columbia Asia Hospital • Celebrity Fitness • Gamuda Walk • AEON BiG • Hero Market 	<ul style="list-style-type: none"> • Kota Permai Golf & Country Club • Bukit Kemuning Golf & Country Resort 	<ul style="list-style-type: none"> • SJK (C) Chung Hua Kota Kemuning • SJK (C) Bukit Fraser • SMK Kota Kemuning • SK Bukit Kemuning 2 • Chinese Taipei School Kuala Lumpur
7KM	<ul style="list-style-type: none"> • RHB Bank • Hong Leong Bank • OCBC Al-Amin Bank • Affin Bank • CIMB Bank • Maybank • Putra Heights LRT Station • MAHSA University Specialist Hospital (Upcoming) 	<ul style="list-style-type: none"> • Kota Kemuning Lakeside Park 	<ul style="list-style-type: none"> • SK Kota Kemuning • SK Bukit Rimau • MAHSA University
10KM	<ul style="list-style-type: none"> • Sentosa Specialist Hospital 		

SincereTM
Responsible
Original

Gamuda Land (Kemuning) Sdn Bhd
[200201030459 (598122-P)]
twentyfive7 Experience Gallery
Lot 43495, Persiaran Oleander,
42500 Telok Panglima Garang,
Selangor Darul Ehsan, Malaysia.



gamudaland.com.my
03 2787 7949

All information contained here (including figures, specifications, plan measurements, and illustrations) are subject to amendments, variations and modifications without notification as may be required by the relevant authorities or developer's consultants, and is not intended to form and cannot form part of an offer or contract. All images, pictures, plans and illustrations are artist's impressions only and may be subjected to changes. Whilst every reasonable care has been taken in preparing this information, the developer cannot be held liable for any variation or inaccuracy.